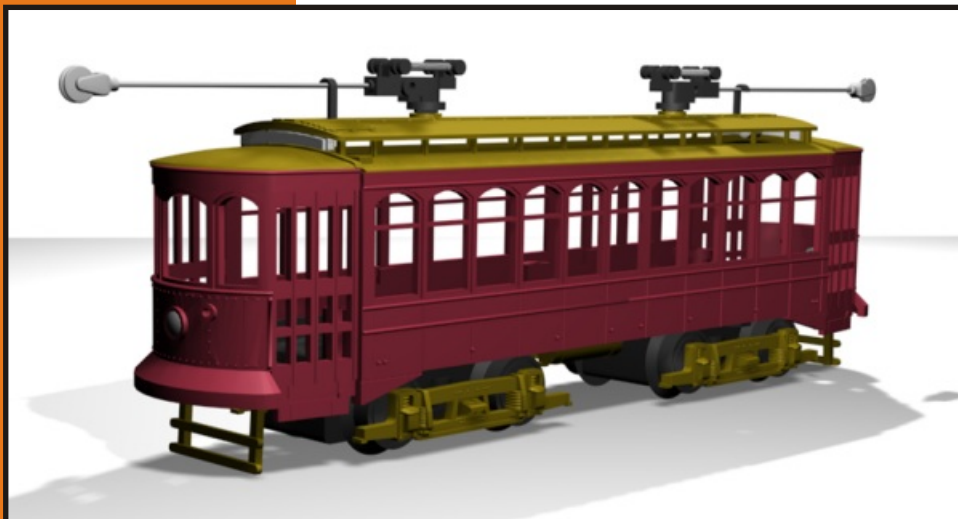


RAILKING[®]
By M.T.H. Electric Trains

Brill Trolley

30-2512-1



REV.080400

Brill Trolley

Parts

Name and Number	Part #	\$Price Per Unit	Name and Number	Part #	\$Price Per Unit
1.) Trolley pole (complete)	FF-3200027	10.00	40.) Board (Proto-Sound®)(bottom)	AD-4500003	*60.00
2.) Trolley pole (no springs)	FF-3200028	9.00	41.) Proto-Sound Chip®	N/A	19.95
3.) Spring (3.0X16.5mm) (w/ 0.3mm thick wire)	IE-0000053	0.50	42.) Board (Proto-Sound®)(top)	AE-4500001	*100.00
4.) Lens (clear) (187.0mm long)	FA-3200009	2.00	43.) Bracket (Proto-Sound® board)	IH-0000218	2.00
5.) Washer (clear) (5.0X9.0X0.2mm)	ID-0000086	0.15	44.) Screw (4/40X18.0mm)(roundhead)	IA-0000094	0.15
6.) E-clip (3.0X8.0X0.5mm)	IF-0000002	0.15	45.) Bracket (battery)	IH-0000219	3.00
7.) Lens (Easton)	FA-3200010	3.00	46.) Battery	BG-4000001	9.95
8.) Lens (Allentown)	FA-3200011	3.00	47.) Battery leads (145.0mm long wires)	BC-0000003	5.00
9.) Roof (tan)	FF-3200029	*14.00	48.) Screw (M3X6.0mm)(roundhead)	IA-0000016	0.15
10.) Bulb (1.5V)(grain of wheat) (80.0mm long wires)(blue wires)	CA-0000029	2.00	49.) Volume pot (small pot) (110.0mm long wires)	BI-0000046	5.00
11.) Bulb (1.5V)(grain of wheat) (70.0mm long wires)(green wires)	CF-0000005	2.00	50.) Wire nut (yellow)	BI-4500003	0.25
12.) Shell (# 212)(red) (Lehigh Valley Transit)	FF-3200030	*25.00	51.) Screw (M3X8.0mm) (roundhead)(plastic cutting threads)	IA-0000204	0.15
13.) Clip (black) (trolley pole)	FF-3200031	2.00	52.) Screw (nickel) (M2.5X12.0mm)(roundhead)	IA-0000160	0.15
14.) Wire strap (metal)	IH-0000103	1.00	53.) Screw (M3X6.0mm)(washer head)	IA-0000215	0.15
15.) Lens (clear) (headlight/back-up light)	FA-3200012	2.00	54.) Truck (2 axle) (non-powered)(spoked wheels)	DA-0000010	*25.00
16.) Lens (tinted w/ figure) (door lens has one tab on each side)	FA-3200013	4.00	55.) Truck (2 axle) (powered)(spoked wheels)	DA-0000009	*30.00
17.) Lens (tinted w/ figures)	FA-3200014	6.00	56.) Insulator (pick-up)(round)(top)	BD-0000046	2.00
18.) Lens (tinted w/ figure) (door lens has two tabs on each side)	FA-3200015	4.00	57.) Truck side (tan)	DB-0000006	10.00
19.) Rubber band	BI-4500004	0.50	58.) Undercarriage detail (tan)	FF-3200033	*10.00
20.) Motor (RS-365SH)	BE-0000049	25.00	59.) Screw (tan head) (M3X8.0mm)(roundhead)	IA-0000300	0.15
21.) Motor mount	BI-0000041	15.00	60.) Screw (4/40X6.0mm)(flathead)	IA-0000038	0.15
22.) Bulb (12V)(small globe) (bayonet base)	CG-0000002	1.00	61.) Insulator (pick-up)(bottom)	BD-0000003	2.00
23.) Socket (for bayonet base)	CH-0000005	3.00	62.) Pick-up (6.0X11.0mm roller) (18.5mm long)(screws on from top)	BD-0000004	5.00
24.) Screw (M3X4.0mm)(roundhead)	IA-0000010	0.15	63.) Wire harness (blue) (38.0mm long wires)(1 male & 1 female plug)	BC-0000055	2.00
25.) Grommet	IH-0000010	0.15	64.) Wire harness (green) (38.0mm long wires)(1 male & 1 female plug)	BC-0000056	2.00
26.) Bracket (light bracket)	IH-0000217	3.00			
27.) Bulb (1.5V)(grain of wheat) (170.0mm long wires)(blue wires) (w/ 150.0mm long wires w/ female plug)	CA-0000030	3.00			
28.) Bulb (1.5V)(grain of wheat) (200.0mm long wires)(green wires) (w/ 175.0mm long wires w/ female plug)	CF-0000006	3.00			
29.) Grill (tan)	FF-3200032	6.00			
30.) Chassis (black)	GB-3200002	*15.00			
31.) Screw (M3X10.0mm)(roundhead)(w/ lock washer)	IA-0000155	0.15			
32.) Screw (yellow zink) (M2.5X6.0mm)(roundhead)(w/ lock washer)	IA-0000089	0.15			
33.) Screw (4/40X6.0mm)(roundhead)	IA-0000003	0.15			
34.) Insulator washer	ID-0000033	0.15			
35.) Insulator	ID-0000024	0.15			
36.) Screw (4/40X4.0mm)(roundhead)	IA-0000021	0.15			
37.) Bracket (Proto-Sound® board)	IH-0000072	2.00			
38.) Bracket (speaker)	IH-0000129	1.00			
39.) Speaker (Unison U4508BSR, 8 ohms, 9W)	BF-4500013	8.95			

*Requires Exchange
All parts are priced as each

Brill Trolley

