



C&O Hudson

4-6-4

30-1161-1

30-1161-0

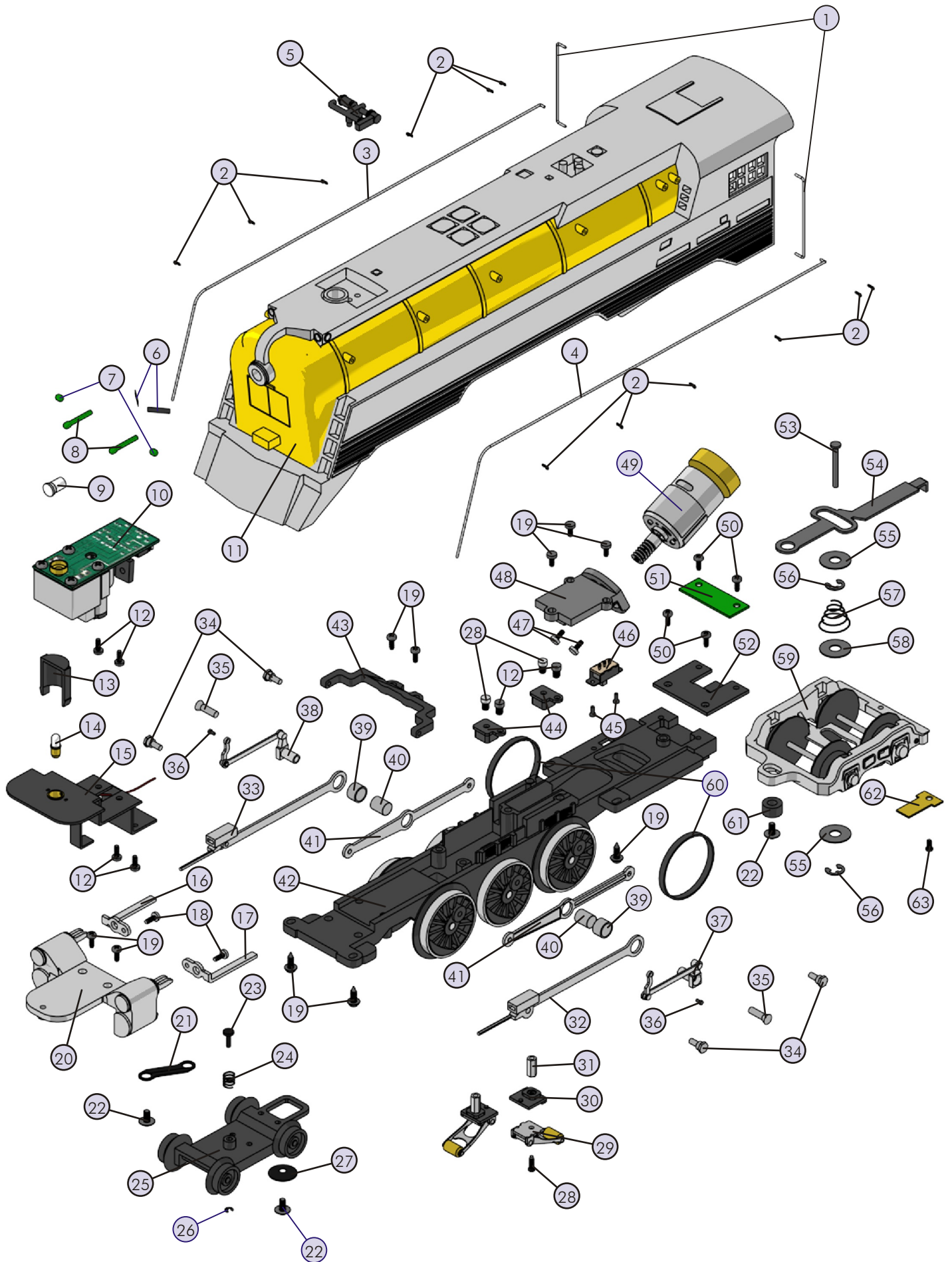


C&O Hudson 4-6-4 Steam Engine

Engine Parts

Name and Number	Part #	\$Price Per Unit	Name and Number	Part #	\$Price Per Unit
1.) Handrail (cab)(nickel) (42.0mm long)(1.0mm thick wire)	FB-1200171	1.00	39.) Sleeve (outer)(nickel)	ID-0000059	1.00
2.) Stanchion (nickel)	FB-1200172	0.25	40.) Sleeve (inner)(nickel)	ID-0000058	1.00
3.) Handrail (boiler)(right) (nickel)	FB-1200173	2.00	41.) Side rod (nickel)	EC-1250003	2.00
4.) Handrail (boiler)(left) (nickel)	FB-1200174	2.00	42.) Drive block (3 axle)(black) (gray drive wheels)	DF-1200026	*75.00
5.) Whistle manifold assembly (black)	FB-1200175	8.00	43.) Motion hanger (black)	EA-1200011	4.00
6.) Number board (sticker)(# 491)	FG-1200005	1.00	44.) Insulator (pick-up)(top)	BD-0000047	2.00
7.) Lens (marker) (green) (pin w/ hole in center)	FA-0000062	1.00	45.) Screw (M2X4.0mm)(roundhead)	IA-0000058	0.15
8.) Lens (marker)(green)(pin)	FA-0000063	1.00	46.) Switch (small)	BB-0000009	5.00
9.) Lens (headlight)	FA-0000064	2.00	47.) Screw (yellow zink) (M2.5X6.0mm)(roundhead w/ lock-washer)	IA-0000089	0.15
10.) Smoke unit	AA-0000024	50.00	48.) Motor mount	BI-0000034	15.00
11.) Shell (C & O Hudson) (# 491)(silver & yellow)	FB-1200176	*150.00	49.) Motor (RS-385PH) (6.5X28.0mm long worm gear)(1.5mm long threads) (11.0X30.0mm flywheel)	BE-0000040	25.00
12.) Screw (4/40X6.0mm)(roundhead)	IA-0000003	0.15	50.) Screw (6/32X6.0mm)(roundhead)	IA-0000027	0.15
13.) Light reflector (black)	CI-0000025	3.00	51.) PCB board	BB-0000019	8.00
14.) Bulb (18V)(small globe) (screw base)	CA-0230001	1.00	52.) Bracket (black) (PCB board extension)	IH-0000139	3.00
15.) Bracket (headlight/smoke unit)	IH-0000138	3.00	53.) Pin (black) (5.0X27.5mm)(w/ 2 e-clip grooves)	IG-0000002	0.50
16.) Drive rod guide (right) (33.0mm long)(nickel)	EA-1210010	3.00	54.) Draw bar (black)	FB-1200107	3.00
17.) Drive rod guide (left) (33.0mm long)(nickel)	EA-1220010	3.00	55.) Washer (black) (5.0X12.0X0.8mm)	ID-0000012	0.15
18.) Screw (6/32X6.0mm)(roundhead)(nickel)	IA-0000051	0.15	56.) E-clip (black) (3.5X9.0X0.6mm)	IF-0000009	0.15
19.) Screw (6/32X8.0mm)(roundhead)	IA-0000050	0.15	57.) Spring (7.5X13.0X11.0mm)	IE-0000013	0.50
20.) Steam chest (gray)	EF-1230014	15.00	58.) Washer (black) (6.5X16.0X1.0mm)	ID-0000057	0.15
21.) Bracket (lead truck mounting bracket)	IH-1230001	1.00	59.) Truck (gray) (trailing)(2 axle)	DA-1240031	20.00
22.) Screw (6/32X6.0mm)(washer head)	IA-0000214	0.15	60.) Traction tire	DE-0000027	0.75
23.) Pin (black) (3.0X15.0mm)(w/ single e-clip groove)	IG-0000003	0.50	61.) Spacer (black) (6.5X10.0X9.0mm)	ID-0000015	1.00
24.) Spring (6.5X9.0mm)	IE-0000009	0.50	62.) Ground strap	II-4500002	1.00
25.) Truck (lead)(2 axle)(black)	DA-1230004	20.00	63.) Screw (4/40X4.0mm)(roundhead)	IA-0000021	0.15
26.) E-clip (2.5X6.0X0.5mm)	IF-0000004	0.15	NS.) Wire nut (yellow)	BI-4500003	0.25
27.) Spacer	ID-0000014	1.00			
28.) Screw (nickel) (M3X6.0mm)(roundhead)	IA-0000015	0.15			
29.) Pick-up	BD-0000048	5.00			
30.) Insulator (pick-up)(bottom)	BD-0000001	2.00			
31.) Nut (2.5X5.0X10.0mm)	IC-0000005	0.50			
32.) Drive rod (left)	EC-1220010	5.00			
33.) Drive rod (right)	EC-1210010	5.00			
34.) Bolt (side rod)(nickel)	IA-0000054	1.00			
35.) Screw (M3X16.0mm)(flathead)(nickel)	IA-0000052	0.15			
36.) Screw (M2X5.0mm) (roundhead)(2.5mm undersized shank)	IA-0000119	0.15			
37.) Eccentric assembly (left) (nickel)	ED-1220021	5.00			
38.) Eccentric assembly (right) (nickel)	ED-1210021	5.00			

*Requires Exchange
All parts are priced as each



C&O Hudson 4-6-4 Steam Engine Tender

Tender Parts

Name and Number	Part #	\$Price Per Unit
1.) Lens (back-up light)	FA-0000065	2.00
2.) Shell (C & O Hudson) (yellow & silver)	GA-1200062	*85.00
3.) Handrail (nickel) (48.0mm long)	GA-1200063	1.00
4.) Clip (bottom)(black)	IF-0000007	1.00
5.) Clip (top)(black)	IF-0000006	1.00
6.) Screw (M3X4.0mm)(roundhead)	IA-0000010	0.15
7.) Bracket (battery) (horizontal side mount)	IH-0000116	3.00
8.) Battery	BG-4000001	9.95
9.) Battery leads (145.0mm long wires)	BC-0000003	5.00
10.) Screw (4/40X6.0mm)(roundhead)	IA-0000003	0.15
11.) Insulator (washer)	ID-0000033	0.15
12.) Insulator	ID-0000024	0.15
13.) Bracket (Proto-sound boards)	IH-0000140	3.00
14.) Screw (4/40X18.0mm)(roundhead)	IA-0000094	0.15
15.) Volume pot (BK10 SW) (100.0mm long wires)	BI-0000044	5.00
16.) Bracket (volume pot)	IH-0000023	2.00
17.) Nut (6.0X10.0X2.0mm)	IC-0000007	0.50
18.) Washer (7.0X12.0X0.5mm)	ID-0000034	0.15
19.) Screw (M3X8.0mm) (roundhead)(self-drilling)	IA-0000072	0.15
20.) Bracket (speaker)	IH-0000129	1.00
21.) Speaker (STAR PR-05004-08)	BF-4500008	8.95
22.) Proto-Sound® board (top)	AE-4500001	*100.00
23.) Proto-Sound Chip®	N/A	19.95
24.) Proto-Sound® board (bottom)	AD-4500001	*60.00
25.) Screw (6/32X6.0mm)(washer head)	IA-0000039	0.15
26.) Chassis (black)(tender)	GB-1200034	*15.00
27.) Wire harness (tender) (260.0mm long)(w/ extra 120.0mm long black wire) (red, white, yellow & black wires w/ plugs)	BC-0000069	8.00
28.) Draw bar	GA-1200064	2.00
29.) Screw (4/40X6.0mm)(washer head)	IA-0000028	0.15
30.) Screw (6/32X8.0mm)(roundhead)	IA-0000050	0.15
31.) Truck (3 axle)(gray)	DA-1250011	30.00
32.) Ground strap (u-shaped)	II-0000011	1.00
33.) Screw (4/40X4.0mm)(roundhead)	IA-0000021	0.15
34.) E-clip (3.0X8.0X0.5mm)	IF-0000002	0.15
35.) Washer (4.5X10.0X0.6mm)	ID-0000041	0.15
36.) Spring (6.5X14.0mm)(w/ 0.5mm thick wire)	IE-0000022	0.50
37.) Proto-Coupler® (51.5mm long)	DD-0000001	10.00
38.) T-bar	IG-0000001	0.50

Name and Number	Part #	\$Price Per Unit
-----------------	--------	------------------

Whistle Only Parts

10.) Screw (DCRU bracket) (M3X4.0mm)(roundhead)	IA-0000010	0.15
13.) Bracket (aluminum) (DCRU mounting bracket)	IH-0000141	3.00
14.) Screw (4/40X18.0mm)(roundhead)	IA-0000094	0.15
22.) Whistle board	AF-4500005	29.95
24.) DCRU Board (new design) (w/ red, black & green plugs)	AC-0000008	39.95
27.) Wire harness (tender) (190.0mm long wires)(1 red & 1 black plug) (w/ 70.0mm long extra black wire w/ eyelet)	BC-0000070	8.00
35.) Washer (plastic cup)	ID-0000060	0.15
36.) Spring (6.5X11.0mm)(w/ 0.4mm thick wire)	IE-0000007	0.50
NS.) Coupler (51.0mm long)	DD-0000011	3.00
NS.) Armature (45.0mm long)	DD-0000012	1.00
NS.) Bracket (plastic) (u-shaped)	IH-0000119	2.00
NS.) Screw (bracket mounting) (M3X4.0mm)(roundhead)	IA-0000010	0.15
NS.) Switch (small)	BB-0000009	5.00
NS.) Screw (for switch) (M2X4.0mm)(roundhead)	IA-0000058	0.15

*Requires Exchange
All parts are priced as each

